

MARCH 2021

# IN TOUCH

A DIGITAL NEWSLETTER FROM

## SAFFRON WALDEN CONSTITUENCY CONSERVATIVES



### CORONAVIRUS

#### FIND ADVICE AND OFFER HELP

##### GOVERNMENT GUIDANCE

Find up to date Government guidance on a wide range of issues including: protecting yourself and others, employment and business support, benefits and travel at: [www.gov.uk/coronavirus](http://www.gov.uk/coronavirus)

##### HEALTH GUIDANCE

If you are exhibiting symptoms of Coronavirus (a temperature, dry cough or loss of taste and smell) DO NOT visit a GP or hospital. You should self isolate immediately and call **111**.

##### LOCAL SUPPORT

In response to the Coronavirus crisis, Essex Welfare Service has been set up to support the most vulnerable in our community. You can call Essex Welfare Service on **0300 303988** or visit [www.essexwelfareservice.org.uk](http://www.essexwelfareservice.org.uk)

##### VOLUNTEERING

You can volunteer to help in Essex through: [facebook.com/essexcoronavirusaction](https://www.facebook.com/essexcoronavirusaction) or visit Volunteer Uttlesford at [www.volunteeruttlesford.org.uk](http://www.volunteeruttlesford.org.uk)

You can also sign up to be an NHS Volunteer at [www.goodsam.org/NHS](http://www.goodsam.org/NHS), roles include calling people in self isolation, delivering medicine or doing shopping for people in self isolation.

## Dear Residents

Before all lockdown restrictions are lifted there will be elections on May 6th for the Essex County Council, the Police, Fire and Crime Commissioner, and for seats on some parish and district councils. It is important that Conservative candidates are elected in each of these seats to stop the damage that R4U is creating in Uttlesford and the Liberal Democrats in Chelmsford. They must not be allowed to get anywhere near to Essex County Council who have provided excellent support and service especially during the pandemic.

In Uttlesford the 2019-20 accounts have still not been signed off because of an ongoing police investigation. There is major concern over the level and detail of R4U's investments, including in an armament's factory, a retail park and a veterinary practice in Glasgow. Crucially, the lack of a Local Plan is risking unwanted development throughout the District.

Liberal Democrats on Chelmsford City Council are being seen to waste money on vanity projects, whilst penalising residents with a 2.49% Council Tax rise. Added to this they are imposing a 12% increase on burial and cremation costs and first-time parking charges at Hylands country park. This ineptitude and disregard of its residents, is in stark contrast to the previous Conservative Administration which was able to build up healthy reserves to meet a future budget shortfall.



### OTHER USEFUL HELPLINES

For support and conversation for elderly people:

[@TheSilverlineUK](https://www.silverline.org.uk) - 0800 470 8090

[@Age\\_uk](https://www.ageuk.org.uk) - 0800 678 1602

For Mental Health support:

[@MindCharity](https://www.mind.org.uk) - 0300 123 3393

# £13 MILLION FOR HIGHWAYS

Essex County Council has received over £13 million as part of the Government's £500 million funding for highways maintenance.

This funding will go towards ensuring fixing potholes and other road maintenance across the county.



## CONTACT YOUR LOCAL CONSERVATIVE TEAM

01799 506349

[office@saffronwaldenconservatives.org.uk](mailto:office@saffronwaldenconservatives.org.uk)

[www.saffronwaldenconservatives.com](http://www.saffronwaldenconservatives.com)

Facebook: @SWTories

Instagram: @SWTories

Twitter: @SWTories



## UPDATES

### Cllr Susan Barker

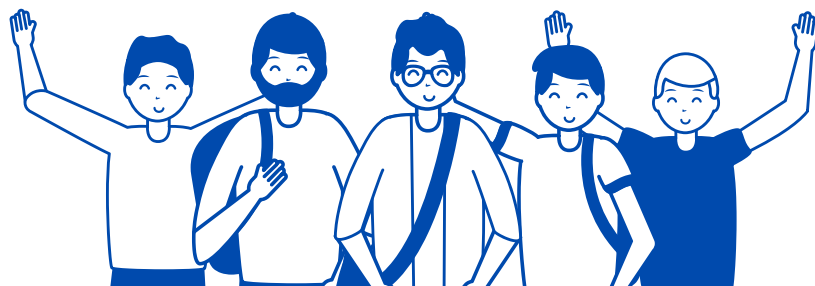
-Cllr Susan Barker, County Councillor for Great Dunmow, and Cabinet Member

## LIBRARIES

It's great news that Libraries across Essex will be opening their doors on April 12th and they are open for click and collect from March 8th. Staff look forward to you bringing back your audios and books and borrowing some new ones. Staff will also be available to help you with completing your census form if you are having difficulties or know someone who is.

## FLOODING

Essex County Council budget committed extra resource to address flooding issues across the County. This is great news and will bring resolution to some long standing issues in Margaret Roding, Great Canfield, High Easter and Great Hallingbury. Many of the issues we have had this spring were as a result of an incredible amount of rainfall but a few do need intervention from Landowners and Highways.



## YOUTH CENTRE

Dunmow Youth Centre should be back up and operational from early May and a good resource for locals. The substantial cracks were caused by underground pipes collapsing and these are now being mended ahead of the above ground work. Young residents will soon be able to get together to enjoy activities there.

## COUNCIL TAX

Essex County Council has frozen Council tax this year but raised the adult social care precept by 1.5%. The County Council spends over £600m on adults with care needs.

The Residents4U administration at Uttlesford has gone for the maximum rise of £5 per band D property which equates to £3.19%.

For what it means for your Council Tax Bill [click here for full details.](#)

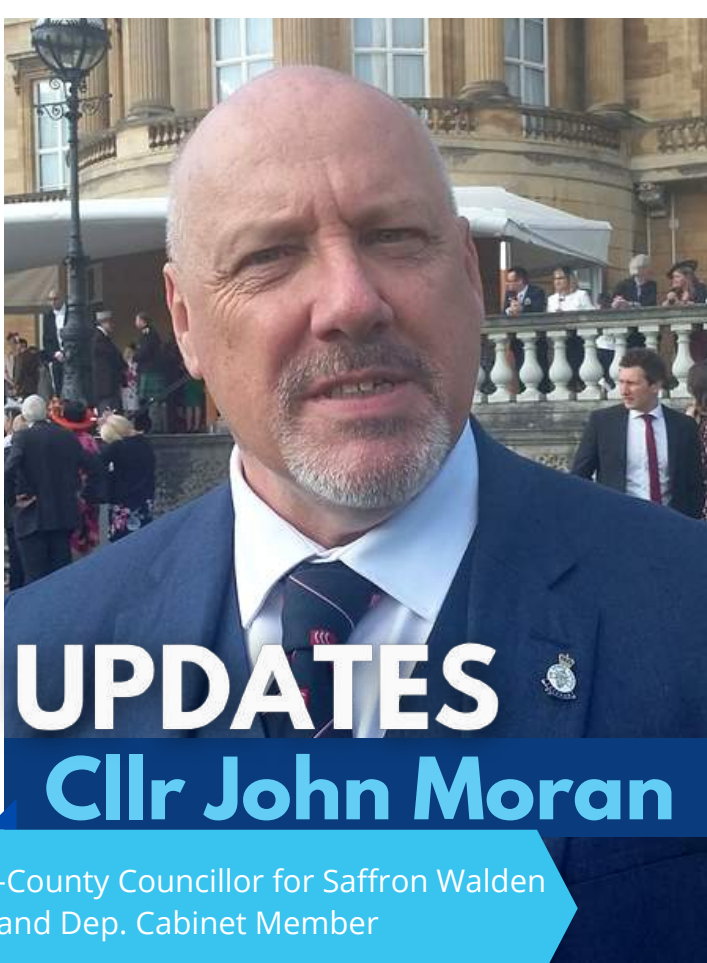
## BROADBAND

In rural areas there is a lot of work going on to get those final properties connected to Broadband. This is positive but I have heard from a number of people not happy with the reinstatement of the pavement or verge. Please get in contact with your County Councillor who can get this followed up.

## LATEST NEWS

# ESSEX COUNTY COUNCIL TO FREEZE COUNCIL TAX

For the sixth time in ten years



# UPDATES

## Cllr John Moran

-County Councillor for Saffron Walden and Dep. Cabinet Member

### FOCUSSED ON COMMUNITY, COVID AND RECOVERY

Support for local businesses by working with Saffron Walden BID, sponsoring 'Welcome Back Walden' after first lockdown and the Walden Christmas Arch.

As Deputy Cabinet Member for Health & Adult Social Care I have worked with the NHS and other health professionals on the very successful covid vaccination roll out and test and trace. Organised support for elderly and vulnerable adults in residential accommodation and those receiving domiciliary care during the covid crisis.

### HIGHWAYS

New pedestrian crossings on Ashdon Road, Peaslands Road and in the near future Thaxted Road and the High Street. Two new footpaths on Ashdon Road, and planned new footpath on Thaxted Road from Peaslands Road. Speed limit reductions and safety changes at Little Walden and this coming summer on Audley End Road and Langley Lower Green.



## ESSEX TREE PLANTING

Cllr Mike Steel, City Councillor for the Broomfield and Walthams ward.



## Cllr Mike Steel

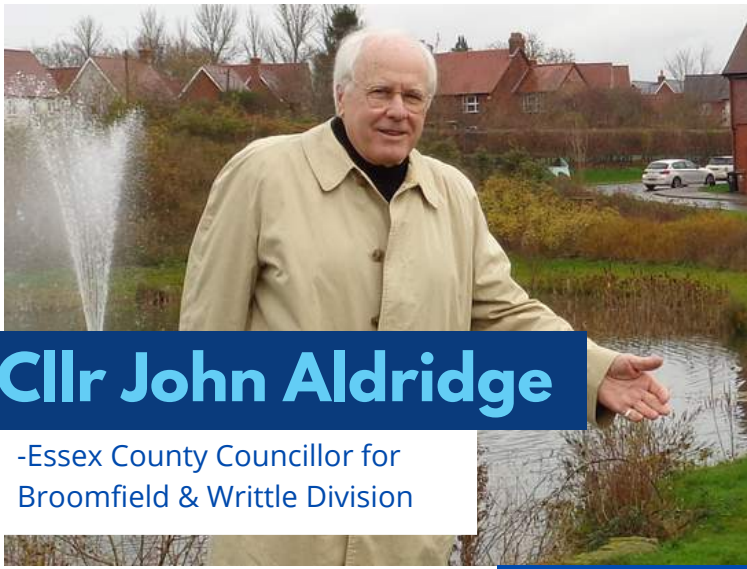
Conservative Green Spokesman

## CLICK HERE

to secure your vote with a **postal** vote!



More than 14,000 trees have been planted in the Chelmer Valley as part of National Tree Week. Essex County Council has formed a partnership with conservation charity, the Woodland Trust and landscaping specialists, to carry out the planting as part of ECC's Essex Forest Initiative. This will see 375,000 trees planted over five years in order to tackle climate change and help to lock up 60,000 tonnes of carbon. The commitment to net zero greenhouse gas emissions by 2050, requires the expansion of the UK's tree canopy cover from 13 per cent to 17 per cent. To reach that target there needs to be a huge upturn in the amount of woodland being created.



## Cllr John Aldridge

-Essex County Councillor for Broomfield & Writtle Division

## MEMBERS LOCALITY FUND

Cllr John Aldridge has allocated £10,000 to 12 community projects across the Broomfield & Writtle Division covering seven parishes and ranging from a Scouts climbing wall in Broomfield to remedial works to the Christian Centre in Writtle. In this year's ECC budget a further sum of £10,000 will be provided to all ECC elected Members to support all our local communities.

## SUPPORTING COMMUNITIES



## Cllr Simon Walsh

-County Councillor for Thaxted and Cabinet Member

Last year saw the introduction of a locality fund which allowed County Councillors to directly support their communities. My allocation of £10,000 has been used to support a number of initiatives: for Felsted a new parish notice board, Broxted new fencing around their village hall, Radwinter received funds to help repair a 'Mens' Shed'; Stebbing had equipment bought for their community stores and play equipment for their young people, as was the case for Little Easton.

A permanent Christmas tree now adorns the recreation green outside Swards End village hall, and Thaxted benefited with support for a conservation project at Culters Green, and a defibrillator outside the library. In addition, I have been able to support Thaxted's foodbank volunteers with Covid support funding of £2000. The recent ECC budget will see the locality fund continue for a further year.

## ENVIRONMENT AND CLIMATE CHANGE

**EXTRA £2.5 Million Secured to protect more homes from flooding**



**FLOODING:** The successful six year £17 million programme of flood prevention measures has seen 1400 homes protected and this year we will be spending **£2.5 million** on further works.

**INITIATIVES:** A raft of climate change initiatives are already underway with grants worth £18 million already secured over the past 12 months. Projects include four carbon neutral schools, and **£6.5 million** has been allocated for innovative modern methods of construction to produce low carbon buildings.

**TREES:** Our Essex Forest initiative has this winter exceeded our target with **35,000 trees planted**. Action not just words.

Finally, we receive the Climate Commission's interim report soon; the £5 million already allocated has been augmented with a £1 million climate community challenge fund, as we know we cannot do this alone; climate change affects us all, and together we can all take measures that reduce its impact.



# Kemi Badenoch

Member of Parliament for Saffron Walden

It has been very busy in Parliament over the last few weeks. In conjunction with the PM's announcement of the roadmap out of lockdown, last week the Chancellor announced the 2021 budget which committed to the continued protection of jobs and livelihoods for residents across our constituency and so much more.

As our vaccination programme continues at pace, the Government has set an ambitious target to offer a first dose of the vaccine to every adult by the end of July. So far over 30,000 residents in our constituency have already received their first dose. We must keep following the current restrictions to ensure we don't have any further delays to reopening.

This week all children and students will return to face to face education in schools and college. It has always been my firm belief that getting children back into school has had to be a top priority and I am glad the government has made this clear.

To read more on how the budget will benefit residents across the Saffron Walden constituency, visit my website at: [www.kemi.badenoch.mp@parliament.uk](http://www.kemi.badenoch.mp@parliament.uk)



Dear Kemi,

I am writing to update you on the fantastic efforts of your local Covid vaccination teams. I am delighted to inform you that the vaccination site at Lord Butler Leisure Centre is one of the best performing vaccination sites in the country. The site works to an extremely effective and sustainable model which can safely vaccinate high numbers of patients across a short time span.

**MATT HANCOCK**

**Health Secretary**



# WORLD CLASS EDUCATION IN ESSEX

89% of schools are 'Good' or 'Outstanding'

As we begin to look forward, it's important to reflect on the past year and how proud the County Council's Youth Services team can be of the exceptional service delivered to young people and families across Essex.

## Cllr Ray Gooding

-Cllr Ray Gooding, County Councillor for Stansted and Cabinet Member

Closer to home, I continue to focus on key matters for residents in my division. In response to the call, I'm leading the introduction of new speed limits in Quendon and we're establishing long term solutions to combat road flooding wherever it strikes.

## WHAT WE HAVE ACHIEVED:

- Investment of over £300m to create 13,000 new school places.
- 95% of children successfully secured either their first or second school choice.
- 35,000 free school meal vouchers provided to families during February half-term.
- 5000 laptops delivered to children to ensure they could keep up to date with their studies.
- Expansion of our free holiday camp programme to include additional sites and the upcoming Easter holidays.

## ROGER HIRST'S PLAN TO MAKE ESSEX SAFER

- **Investing in Essex Police.** An extra 300 Police Officers on top of the 500 we have already hired.
- **Get Crime Down.** More targeting of hotspots and offenders to tackle crime and anti-social behaviour.
- **Keeping our roads safer.** More patrols and working with other agencies to educate and protect all road users.
- **Support the Specials.** We now have the second largest Special Constabulary in the country, and will continue to build it to support our communities.
- **Protect Rural and Isolated areas.** Ensure Police, Fire and Rescue protect those in rural areas.
- **Crack down on violence and drug crime.** Protect vulnerable people from gangs.



**Roger Hirst PFCC**